



Nick Troubetzkoy's
JADE MOUNTAIN
Saint Lucia

Dear Guests,
For latest restaurant
and excursion schedules,
please consult our
weekly guest information
letters or contact
Guest Services.
Thank you

Services & Activities

AT JADE MOUNTAIN

Resort Services • Dining Options • Specialty Dining
Resort Activities • Excursions • Wellness

Welcome

We have compiled a summary of the many services and activities you can expect during your stay and want to introduce you to some of the many options available to you. Please take a moment to browse through our list of services and some of our most popular activities to help with your vacation plans.

If there are any services or activities you would like to pre-book, or just simply to get more information, click here to visit the [pre-arrival concierge](#) page on our website.





Resort Services (in a nutshell)

At JADE MOUNTAIN

- Yoga at Jade Mountain - meet on Celestial Terrace - 7 - 8 a.m.
- Fitness Centre located at lower level of Jade Mountain and accessible from the west end
- In-room WiFi and Jade Mountain reception with Wi-Fi internet connection
- Live Entertainment on select evenings

At ANSE CHASTANET (you are welcome to partake in all activities)

- Anse Chastanet beach with beach chairs and beach towels
- Complimentary use of non-motorized water sports including snorkel gear, windsurfers, sit on top kayaks, Sunfish sailing
- Complimentary use of tennis court and equipment
- Complimentary tennis clinic Monday and Wednesday from 9.00 - 9.30 a.m.
- Resort shuttle boat, Jungle Express to our second beach at Anse Mamin daily for Jungle Beach Bar & Grill, beach activities, jogging and hiking
- Select Guided Walks and Hikes on our 600 acre estate with Meno - learn about history and botany
- Yoga daily 8.30 a.m. - 9.30 a.m. and 5.00 - 6.00 p.m. in the beach yoga gazebo, please sign up with guest services
- Paddle board yoga demonstration in the Anse Chastanet bay every Tuesday from 10.00 a.m.
- Creole History Class in the Beach Bar Friday 11.30 a.m.
- Live Entertainment on select evenings
- Chocolate Sensory Tasting at Emerald Restaurant, Tuesday from 10.00 - 10.30 a.m.
- Saint Lucian Rum Mixology Class every Sunday at the Beach bar from 4.30 - 5.30 p.m.
- Anse Mamin Plantation Walk with Meno, Monday - Saturday from 1.45 p.m. Meet at the Scuba center.

OUR RESTAURANT SCHEDULE

At JADE MOUNTAIN

- Sanctuary Service at any time
- JADE MOUNTAIN CLUB for breakfast, lunch or dinner

At ANSE CHASTANET

- Full Breakfast in our Treehouse Restaurant from 7.00 - 10.00 a.m.
- Lunch in the Trou au Diable Beach Restaurant from 12 noon - 3.00 p.m.
- Lunch on Anse Mamin beach at the Jungle Grill from 12 noon - 3.00 p.m. and Jungle Bar from 10.00 a.m. - 4.00 p.m.
- Afternoon Tea in the Beach Bar 3.30 - 5.30 p.m.
- Beach Bar open daily 8.00 a.m. - 11.00 p.m., Piton Bar open daily 8.00 a.m. until midnight
- Dining in our Treehouses celebrating Tropical World Cuisine 6.30 p.m. - 9.30 p.m. daily except Tuesday
- Dining in our Trou au Diable Restaurant celebrating Apsara, St Lucia-East India fusion cuisine; A beach grill menu is also available.
- Tropical evening with Steelband on Tuesday evening in our beach restaurant
- Emerald's All Vegan Menu served in the Treehouse at dinner time Wed - Mon (all resort menus feature vegetarian and/or vegan options)
- Executive Chef's Monday Gourmet Dinner & Wine Pairing served at 7.00 p.m. in the Treehouse, reservations necessary
- Coco Doux coconut bar at beach bar on Sundays from 11.00 a.m. - 3.00 p.m.

SERVICES AND FACILITIES

At JADE MOUNTAIN

- Kai en Ciel Spa located on lower Jade Mountain level accessible from west end of the building
- Fitness Centre below Kai en Ciel Spa
- Shades of Jade Boutique below the Jade Mountain reception

At ANSE CHASTANET

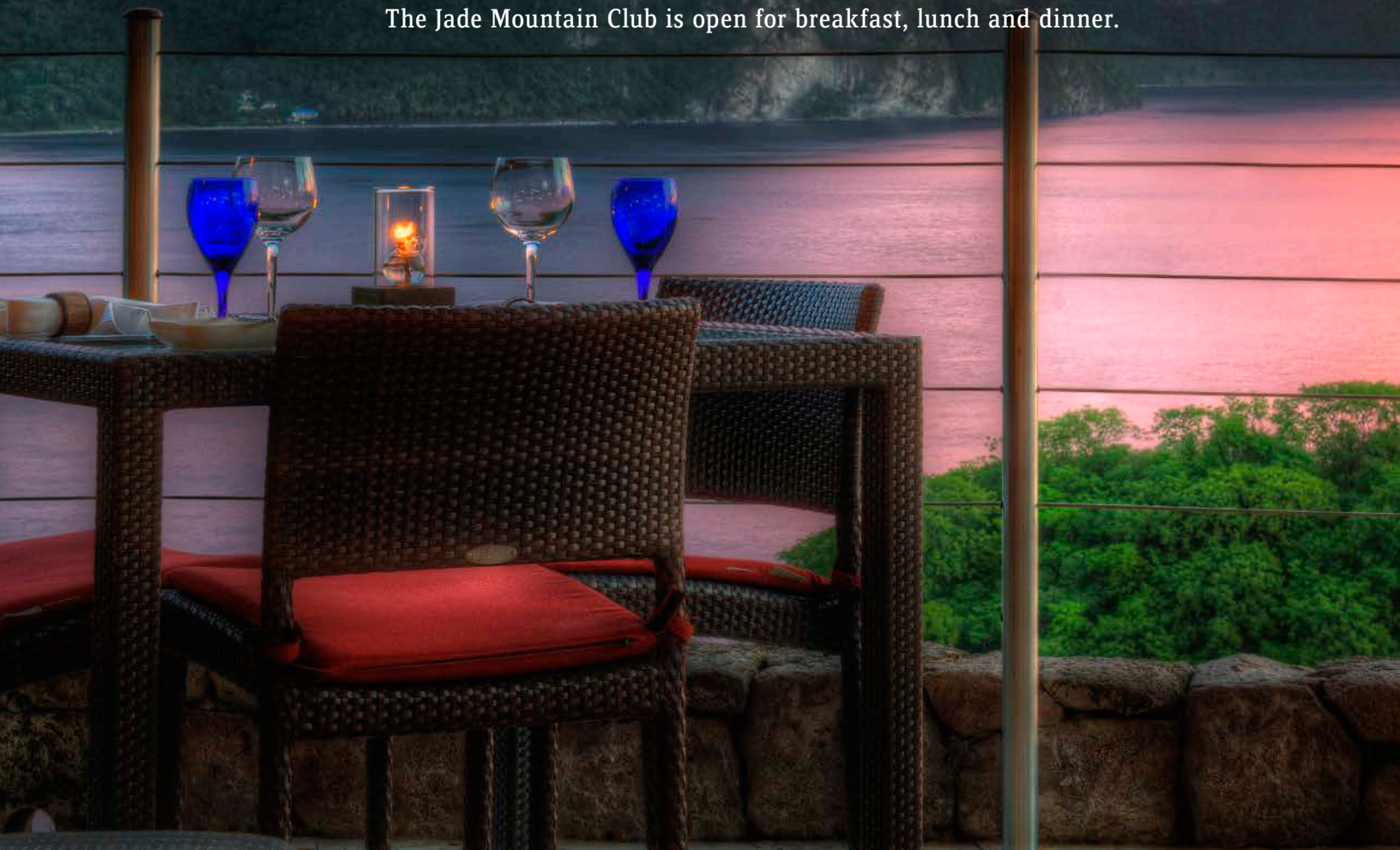
- Spa Kai Belté located at the south end of Anse Chastanet Beach
- Bike St Lucia: Cannondale Mountain Biking Rental with miles of Hiking and Biking Trails at ANSE MAMIN
- Scuba St Lucia: PADI 5-Star Dive Resort Scuba Centre for Scuba Diving, Courses, Equipment, Scuba Retail Shop
- Kayak St Lucia: Specialty Prion Kayak Instruction and trips for fast moving coastal adventures
- Shopping in 2 Beachside Boutiques located within the beach restaurant and Art Gallery located above the Kai Belte Spa

Dining Jade Club

Wrapped around an infinity pool with a dazzling kaleidoscope of colors, the Jade Mountain Club caters exclusively to resident guests, celebrating James Beard Award winner, Chef Allen Susser's "Jade Cuisine."

Drenched in exotic beauty and erupting with flavor, Jade Mountain nourishes both the body and soul. Its "Jade Cuisine" created by James Beard award winner, Chef Allen Susser, is a brave new world of tropical flavors. His cuisine is exotic and delicious with a history of fusion, taking Saint Lucia Dining to new heights, in many ways...

The Jade Mountain Club is open for breakfast, lunch and dinner.



Specialty Dining

Dinner on the Celestial Terrace

Dine under the stars on Jade Mountain's Celestial Terrace. Enjoy a romantic private dinner at anytime during your stay. Advance reservations are required as this option is in high demand.

 [CLICK HERE FOR MORE INFO](#)

Six in Your Sanctuary

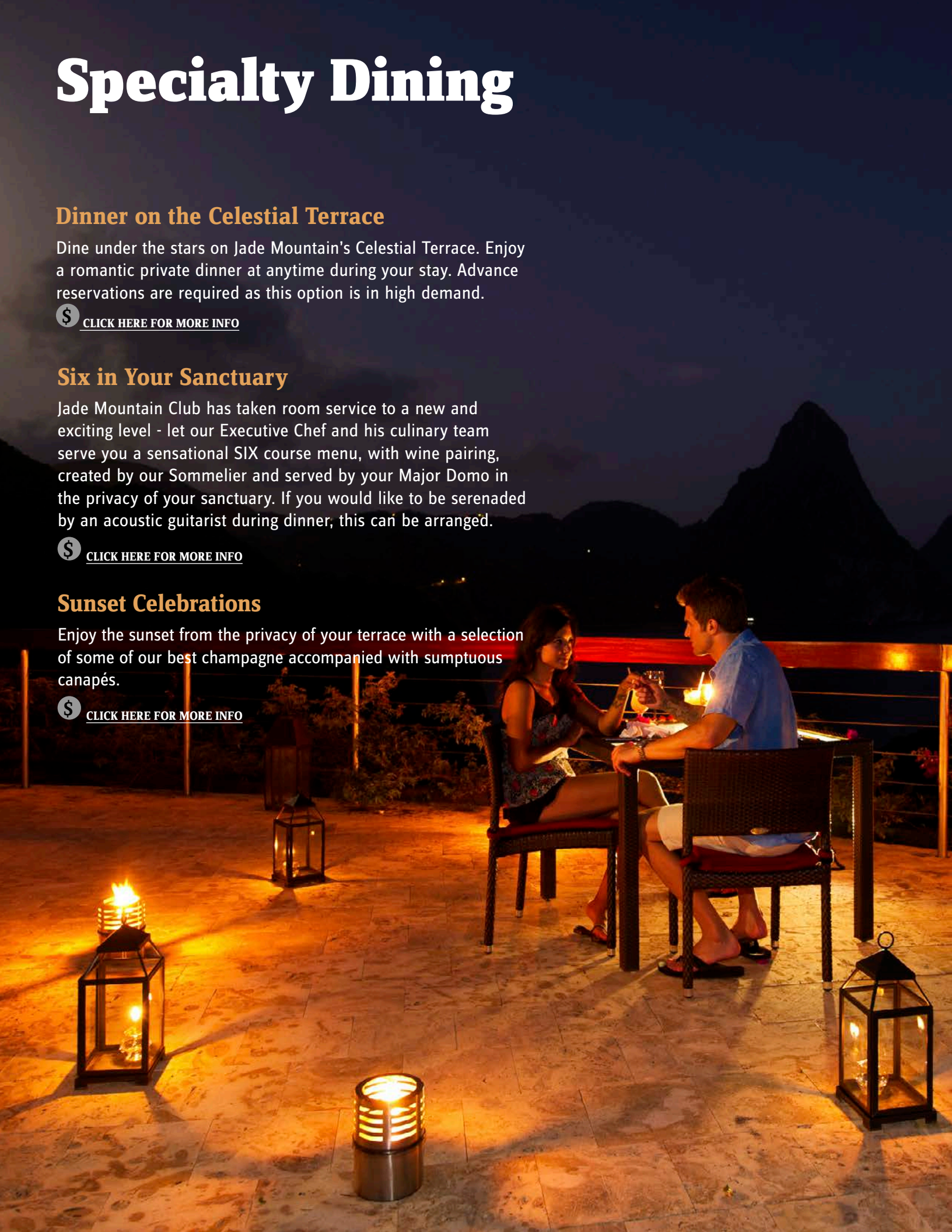
Jade Mountain Club has taken room service to a new and exciting level - let our Executive Chef and his culinary team serve you a sensational SIX course menu, with wine pairing, created by our Sommelier and served by your Major Domo in the privacy of your sanctuary. If you would like to be serenaded by an acoustic guitarist during dinner, this can be arranged.

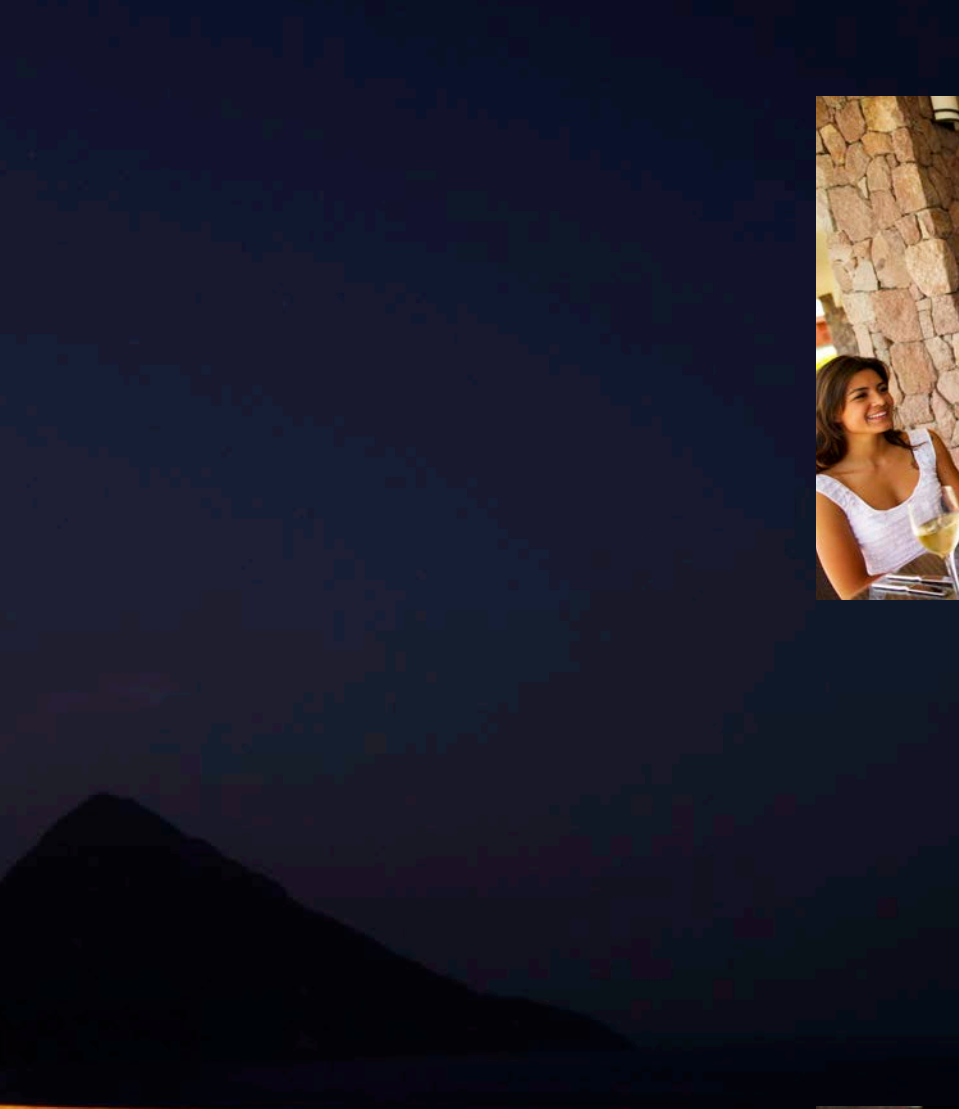
 [CLICK HERE FOR MORE INFO](#)

Sunset Celebrations

Enjoy the sunset from the privacy of your terrace with a selection of some of our best champagne accompanied with sumptuous canapés.

 [CLICK HERE FOR MORE INFO](#)





Chefs on Wheels

Don't feel like leaving your sanctuary? Let our Executive Chef bring his exciting Jade Cuisine right into the privacy of your Jade Mountain sanctuary. Whether you would like a private one hour cooking demonstration or whether you want the chef to prepare a gourmet meal in front of your very eyes, this can all be arranged.

[!\[\]\(9dfdaff1d86ba3c1f8353b4d1b61b8c5_img.jpg\) CLICK HERE FOR MORE INFO](#)



Wine Gourmet with Food Pairings

Our sommelier will entice even the finest palates with the wine gourmet and food pairing adventure that can be arranged in the Jade Mountain Club or in the privacy of your sanctuary.

[!\[\]\(3cb60d42b10e53f9522bb0b392c1c4cd_img.jpg\) CLICK HERE FOR MORE INFO](#)

Weekly Culinary Events

MONDAY

The Emerald Estate Cacao Tree to Chocolate Bar Tour

In this class we would like to indulge you further into the world's favorite aphrodisiac... chocolate. Our chocolate alchemists will host you on our Emerald Estate Cacao Tour to show you the complete cycle of Tree to Bar production. We will discuss the history of chocolate in the Caribbean and the production process. To start off we will visit the Emerald Estate to witness the natural side of cacao including tasting raw cacao while discussing the fermentation, sun drying and polishing of the beans. Then travel back to our own Chocolate Lab to elaborate on the technical part of making the perfect chocolate bar. This 2 hour guided experience takes you through cacao bean roasting, grinding and conching in the making of our chocolate to create the perfect snap and shine. Along the way you will enjoy an invigorating cup of local cacao tea and our organic chocolate bars that range from 60% , 70 % and 92 % Bittersweet.. A complimentary Bar of Emerald Estate Organic Chocolate will be our treat to you as souvenir to take home.

Monday from 9:00 - 11:00 am

Sign up at Guest Services. Minimum 2, maximum 6 persons per session

Caribbean Beach Tandoori Cooking Class

Join our very own local Chef Ruban Kumar to witness his East Indian Saint Lucian Fusion Cuisine and uncover the spicing secrets of Tandoori Cooking in the Caribbean. His team of Chefs will share the special techniques used in spicing up a great Tandoori chicken. Learn the trade secrets of how to blend spices to accompany any dish.

Monday from 4:00 - 5:00 pm in the Apsara Restaurant

Sign up at Guest Services

TUESDAY

Chocolate Sensory Tasting

Join us on an awakening journey through the flavor palate of cacao and chocolate. We will start by tasting the cacao bean, which is the very first step in chocolate production, and end with the strongest type of cacao mass while sampling all in between. We will focus our attention on how to truly appreciate chocolate as it should be tasted and educate ourselves on its distinct differences. As a culmination of the sensory tasting session sample some of our homemade truffles and a taste of Emerald Estate Organic Chocolate bar.

Tuesday from 10:00 - 10:30 am in the Emerald Restaurant

Sign up at Guest Services

Discover Chocolate

For this tantalizing interactive experience following the Chocolate Sensory Tasting, we will move to the Chocolate Lab to discover just how chocolate is made. We are a Tree to Bar organic boutique chocolate producer using only Emerald Estate Organic Cacao. Join our chocolate alchemists to learn the basic techniques of making chocolate, tempering chocolate, creating your own fudge and making a personalized chocolate bar. The best part...you take home what you make! So, if you've ever pondered the alchemy involved in creating the finest of chocolates, enroll in this Discover Chocolate workshop and learn this delightful art for yourself. This class is hands on so be prepared to be covered with chocolate!

Tuesday from 10:30 - 11:30 am in our Chocolate Lab

Sign up at Guest Services. Minimum 2, maximum 6 persons per session

WEDNESDAY

Join our Morning tour of Emerald Estate Cacao Plantation and Emerald Organic Farm

Hosted by our Executive Chef

The resorts organic farm, Emerald Estate, located in the Soufriere hills, is an integral part of our cuisine at Jade Mountain. The farm produces a

wide variety of items including vanilla beans, bay leaf, nutmeg trees, cinnamon, and numerous varieties of mango, sour orange, coconuts, leaves, greens, vegetables and herbs, all brought daily to our kitchens. Included in this visit is an interactive cooking class.

Wednesday from 9:00 - 11:00 am

Sign up at Guest Services

The Emerald Estate Cacao Tree to Chocolate Bar Tour

Wednesday (See description on Monday) from 2:00 - 4:00 pm . US\$75 per person; sign up at Guest Services. Minimum 2, maximum 6 persons per session

THURSDAY

Farm to Table Emerald's Vegan Luncheon Cooking Class

Learn the history and how to prepare authentic Creole cuisine with a twist using local ingredients grown at our own Organic Emerald Farm. The theme is a mosaic of dishes from throughout the Caribbean using ingredients that were harvested fresh that morning and prepared by our Vegetarian Chef, Frank Faucher, who has over 15 years experience in blending local ingredients together to create cuisine that is truly unique for the vegetarian enthusiast.

Thursday from 1:00 - 2:00 pm in the Emerald Restaurant

Sign up at Guest Services

Discover Chocolate

Thursday (See description on Tuesday) From 10:30 - 11:30 am in our Chocolate Lab

Sign up at Guest Services. Minimum 2, maximum 6 persons per session

Chocolate, Wine and Paradise

Learning how to taste wines is a straightforward adventure that will deepen your appreciation for both wines and wine makers. Now we take it one step further to matching and tasting wine with our own hand made organic Emerald Estate Chocolate. Look, smell, taste - starting with your basic senses and expanding! From there you will learn how to taste wines and chocolate like the pros in no time!

Thursday from 5:30 - 6:00 pm - located in the Jade Lounge.

Sign up at Guest Services. Minimum 2 persons

FRIDAY

The Emerald Estate Cacao Tree to Chocolate Bar Tour

Friday (See description on Monday) from 9:00 - 11:00 am.

Sign up at Guest Services. Minimum 2, maximum 6 persons per session

SUNDAY

Saint Lucian Rum Mixology Class

For those who enjoy Caribbean rum, explore the fine craft of mixing cocktails using the basic techniques and tricks of our bartenders. Learn how to make Mojitos, Pina Coladas, and our most popular Coco Doux in our weekly Mixology Class. If you already have a favorite from our Cocktail Menu, we would love to show you how it is made.

Sunday at the Beach bar from 4:30 - 5:30pm.

Complimentary; sign up at Guest Services

AVAILABLE DAILY ON REQUEST

Premium Rum Tasting

Join us for this exclusive premium rum tasting in the Anse Mamin ruins. An exciting opportunity to sample various Caribbean premium rums in a historic setting.

Available on request from 4:00 - 5:30 pm.

Please book with Guest Services

Dining Options

Anse Chastanet



Balawoo Restaurant

Our Culinary team offers a daily changing dinner menu (except Tuesdays) in our Balawoo Restaurant. Balawoo is also available for breakfast.

[GET MORE INFO](#)

[DOWNLOAD BALAWOO MENU](#)



Emeralds Vegan Restaurant

Our organic farm Emeralds provides most of the produce for our vegan menu served at dinner time daily in our Piti Piton lounge. You may ask for the vegan menu in the Treehouse restaurant also.

[GET MORE INFO](#)

[DOWNLOAD EMERALDS MENU](#)



Trou au Diable Beach Restaurant

Serving lunch daily, Trou au Diable offers a wide and varied choice of appetizers, salads, sandwiches, burgers and Caribbean and Creole specialities.

[GET MORE INFO](#)

[DOWNLOAD TROU AU DIABLE MENU](#)



Apsara & Beach Grill

Enjoy our innovative, modern East Indian-St. Lucian theme dinner menu in the beach restaurant daily. In the Beach Bar, the Beach Grill as an additional evening dining option. Both require reservations.

[GET MORE INFO](#)

[DOWNLOAD APSARA & BEACH GRILL MENU](#)

[!\[\]\(bff896c19919791b89ab521f039b410a_img.jpg\) GET MORE INFO](#)

Specialty Dining

Anse Chastanet



Private Candlelight Beach Dinners

Add even more romance to your vacation and reserve a Private Candlelight Beach Dinner located at the water's edge, with your private wait team. Select from 2 different set ups and pre-order your dinner from either our Apsara or Grill menu or you can choose our Executive Chef's Gourmet Dinner with wine pairings.

[!\[\]\(339a16584d5da0f0a3ca4e9ec17bf6a1_img.jpg\) CLICK HERE FOR MORE INFO](#)

Ultimate Castaway Dinner at Anse Mamin Beach

Seeking the ultimate private dinner? If a private tent on Anse Chastanet beach is not private enough for you, then please let us arrange your very own private beach dinner on our second beach of Anse Mamin.

[!\[\]\(3211b5d1d968fc1665909b34f9f16010_img.jpg\) CLICK HERE FOR MORE INFO](#)



Monday Night Gourmet Dinner with Wine Pairing

Choose from a sumptuous 4 course menu paired with world class wines chosen by our Sommelier from our award-winning wine selection. With limited seating, make sure to reserve your table early.

[!\[\]\(9c2e8d1b5bd77cb5c9f83b7a9cff79fd_img.jpg\) CLICK HERE FOR MORE INFO](#)



Lionfish Friday!

Help us keep an invasive species at bay whilst indulging in a 5 course culinary lionfish delight at the water's edge. Try our Executive Chef's Friday Lionfish Degustation menu with optional wine pairing. Don't miss this once in a lifetime dining experience.

[!\[\]\(c507f772dba2b921f86777f01218e570_img.jpg\) CLICK HERE FOR MORE INFO](#)



MUST TRY!

Jungle Grill

Don't forget to try our Jungle Grill & Bar on Anse Mamin beach featuring its famous Burger Menu!

[CLICK HERE FOR MORE INFO](#)



Resort Activities

The resort offers a wide selection of activities both on land and water. Explore the resort's 600-acre estate or embark on some exciting island excursions.

-
- HALF DAY SAILING
- FULL DAY SAILING
- SUNSET CRUISE
- ESCORTED SNORKEL TRIP
- NIGHT SNORKELING
- KOOL KAYAKING
- SCUBA DIVING
- JUNGLE BIKING
- MALGRETOUTE WATERFALL
- JAZZY SUNSET CRUISE
- BOUTON TO ANSE MAMIN
- MUD BATHS WITH SPA ATTENDANT TOUR
- ANSE MAMIN BIRDWATCHING TOUR
- EMERALD ESTATE CACAO TREE TO CHOCOLATE BAR TOUR
- EMERALD ESTATE TOUR AND INTERACTIVE COOKING CLASS

[DOWNLOAD FULL OUR EXCURSIONS BROCHURE](#)

[DOWNLOAD OUR PRIVATE CATAMARAN CHARTERS](#)





Jungle Biking with Bike St. Lucia

 [VISIT BIKE ST LUCIA WEBSITE](#)

Experience the incredible beauty and rich visual texture of eco-friendly trails in a coastal tropical jungle-like setting with ruins from an 18th century French plantation estate. The unique trails, about 12 miles in all, were designed for those new to off-road biking as well as seasoned riders.





Birdwatching

St Lucia is home to more than 174 species of birds including 6 endemic species. The island's dense tropical foliage provides the perfect opportunity for experienced and novice birders alike to observe these creatures from various locations around the island.

 [CLICK HERE FOR MORE INFO](#)



Walking Tours

Taking advantage of the stunning natural beauty found within Anse Chastanet's 600 acres and the surrounding area, the resort offers an array of walk tours that allow guests the opportunity to take in the magnificent scenery while enjoying some exercise.

 [COMPLIMENTARY](#)

Resort Activities

Water Sports

Scuba Diving

Our PADI 5-star scuba center, SCUBA ST. LUCIA, offers divers a variety of dive sites to be visited during their stay. It's located in the heart of St. Lucia's very best diving: the entire region surrounding ANSE CHASTANET is vested into an award winning marine reserve.



VISIT SCUBA ST LUCIA WEBSITE



Windsurfing and Sunfish Sailing

The resort offers guests, on a complimentary basis, windsurfs and Sunfish sailing boats. Being located on the calm Caribbean side of the island, the tropical breezes are gentle and easy to manage.

COMPLIMENTARY



Snorkeling

Experience some of the best snorkeling in St. Lucia right off the Anse Chastanet beach. Avid snorkelers can take advantage of our escorted boat snorkel trips to other snorkel locations in the region.

COMPLIMENTARY

Kayaking

"Sit on top" easy to use kayaks are available on a complimentary basis. In addition, guests can also enjoy special "sit in" Prijon sea kayaks with our kayak centre KAYAK ST. LUCIA.

COMPLIMENTARY



Paddle Boarding

Paddle Boarding is a fun and safe way to explore the waters just off the beach or the perfect way to spend some leisure time.

COMPLIMENTARY

Night Snorkeling

The waters off the Anse Chastanet beach don't just offer a bounty of sealife during the day. Take a dip at night to peek at the variety of nocturnal creatures that wander the bay on Monday and Wednesday nights.

\$

Private Sailing

The location of Anse Chastanet Resort makes it the perfect embarkation site for sailing along St. Lucia's magnificent west coast, as many of the island's premiere coastal attractions are found nearby, including the majestic Pitons. On our Private Sailing Tour options guests are assured of a wealth of sightseeing and photo opportunities along with an exhilarating sailing experience. All Private Sailing options include Champagne along with a variety of other beverage options and delectable hors d'oeuvres.



Jazzy Sunset Cruise

Don't miss out on our jazzy champagne sunset cruise every Thursday! One of St Lucia's favorite saxophonists will be on board to provide a live blend of romantic ballads and soulful rhythms.

[CLICK HERE FOR MORE](#) [INFO](#)



Excursions

Here is our full list of excursions which you can book at anytime during your stay.



MARIGOT BAY



SULPHUR SPRINGS MUD BATH

GROS PITON CLIMB

- VOLCANO, DIAMOND FALLS & GARDENS AND EMERALD ESTATE
- MUD BATHS WITH SPA ATTENDANT
- DIAMOND FALLS PRIVATE MORNING TOUR
- POINTE SERAPHINE DUTY FREE SHOPPING
- ZIP LINE ADVENTURES
- SEA AND LAND TOUR
- CASTRIES/MARIGOT BAY SHOPPING TOUR (SATURDAY)
- RHYTHM OF RUM TOUR
- GROS PITON
- DOLPHIN AND WHALE WATCHING
- DEEP-SEA FISHING
- TET PAUL NATURE TRAIL
- EXPLORER TOUR
- MORNE COUBARIL ZIPLINING AND PLANTATION TOUR
- MORNE COUBARIL / TET PAUL COMBO TOUR
- ENBAS SAUT FALLS HIKING TOUR
- SEGWAY TOUR




Wellness

 GET MORE INFO

Kai en Ciel Spa

Your stay at JADE MOUNTAIN will not be complete without having enjoyed a spa experience at our spas or inside your sanctuary. Kai en Ciel (*Patois/Creole for house in heaven*) is part of Jade Mountain, featuring two air conditioned rooms in addition to hair, manicure and pedicure stations. Additionally, JADE MOUNTAIN guests may also enjoy the spa services of Kai Belté Spa at beach level at ANSE CHASTANET. Kai Belté (*Patois/Creole: house of beauty*) is located at beach level between the Trou au Diable Restaurant and the scuba center. There are 5 air conditioned treatment rooms, an air conditioned hair and nail salon as well as our open-air cabana Kai Mer overlooking the Anse Chastanet reef.

 [CLICK HERE FOR MORE INFO](#)

Fitness Studio

There is a small, air- conditioned fitness centre with Cybex and Life Fitness equipment next to the spa Kai en Ciel. Cardio equipment, multi-function workout station, benches and weights are available.

COMPLIMENTARY



Yoga

The classes by our resident Yoga instructor are non-competitive and open to complete beginners as well as to those more advanced. More challenging variations can be offered to more experienced students. The instructor is also available for private Yoga sessions.

COMPLIMENTARY

 [CLICK HERE FOR MORE INFO](#)

Specialty Dining Price List

SUNSET CELEBRATIONS

Watching the sunset from the privacy of your terrace in style.
From US 125 - US 600

SIX IN YOUR SANCTUARY

Taking room service to a new and exciting level. Six course menu with wine pairing. US 300 per person

GOURMET DINNER WITH WINE PAIRING

Mondays in the Treehouse Restaurant - US 125 per person
Guests on All-Inclusive Plan US50 per person
Guests on MAP US 80 per person

THE ULTIMATE LIONFISH DINNER

Menu including wine pairing - US 95 per person excluding wines
Surcharge for guests on MAP, FAP or AI plan USD 45 per person
Optional wine pairing: US 55 per person

WINE GOURMET WITH FOOD PAIRINGS

US 495 per person

DINE UNDER THE STARS ON THE CELESTIAL TERRACE

Enjoy a private romantic dinner on the Celestial Terrace including dedicated waiter service
From US 95 per person (+ US 225 set up fee)

CHEF ON WHEELS

"Chef's Table" In your Sanctuary
Let our Executive Chef bring his exciting Jade Cuisine right into the privacy of your sanctuary. US 445 per couple. 3 course lunch with wine pairing.

CASTAWAY

Our ultimate private gourmet dinner at Anse Mamin Beach
For two persons: US 995

PRIVATE DINING EXPERIENCE AT ANSE CHASTANET BEACH

Enjoy a private romantic candlelight dinner at the water's edge.
Platinum US 265
Silver US 130
(Dinner charge extra)

All prices subject to 10% service charge and 10% VAT

Weekly Culinary Events

MONDAY

The Emerald Estate Cacao Tree to Chocolate Bar Tour - US 75 per person

Caribbean Beach Tandoori Cooking Class - US 55 per person

TUESDAY

Chocolate Sensory Tasting - Complimentary

Discover Chocolate

Join our chocolate alchemists to discover the basic techniques of making chocolate. - US 45 per person

WEDNESDAY

Emerald Estate Tour and Interactive Cooking Class - US 95 per person

The Emerald Estate Cacao Tree to Chocolate Bar Tour - US 75 per person

THURSDAY

Farm to Table Emerald's Vegan Luncheon Cooking Class - US 45 per person

Discover Chocolate

US 45 per person

Chocolate, Wine and Paradise

You will learn how to taste wines and chocolate like the pros in no time! - US 45 per person

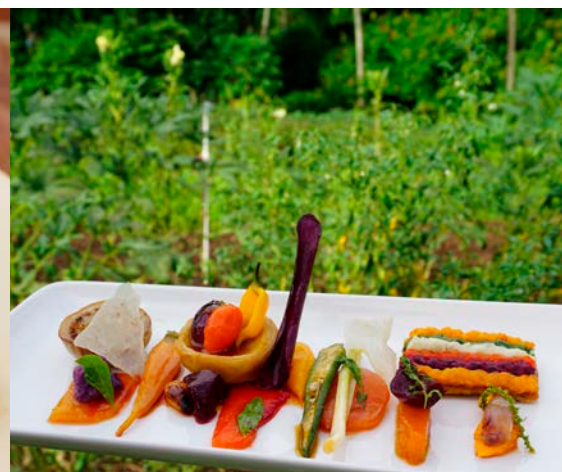
FRIDAY

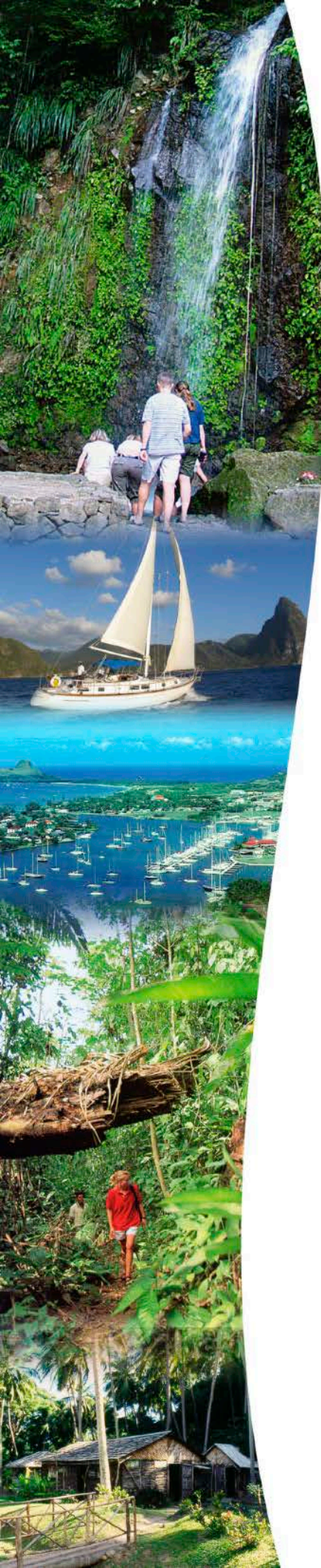
Jade Lunch & Learn Cooking Class - US 95 per person

The Emerald Estate Cacao Tree to Chocolate Bar Tour - US 75 per person

SUNDAY

Saint Lucian Rum Mixology Class - Complimentary





JADE MOUNTAIN EXCURSIONS & TOURS

Please check with Reception for availability. Off-property excursions and tours are subject to government protocols

Dear Guests,

Welcome to JADE MOUNTAIN! We hope you will have a wonderful vacation with us. Depending on your energy levels and – perhaps! – depending on your sense of adventure, you may wish to partake in some of the island excursions we offer here at JADE MOUNTAIN. The Guest Information Booklet in your room provides colorful descriptions of the various excursions and resort activities we offer. Please find below our weekly excursion schedule and price list. **The majority of our tours can also be arranged privately; for this we have a separate price list established, which you can view at the Guest Services or Concierge Desks. We can also arrange a hiking butler to accompany you.** You can sign up for excursions with the Guest Services or Concierge Desks or at Reception. Some excursions - if not booked as a private tour - require a minimum of 4 participants to be confirmed. Please enquire with the Guest Services or Concierge Desks or Reception to be sure your excursion is confirmed. For resort based activities, you can also sign up at the Scuba Center. Our reception team can also arrange private land taxis, water taxis or car rental for you. If you have any special requests, please do not hesitate to contact our management team.

Have a great vacation!

Your Jade Mountain Management Team

ISLAND EXCURSIONS (Sign up at Reception or Guest Services or Concierge Desks)

	SUN	MON	TUE	WED	THU	FRI	SAT
VOLCANO, DIAMOND FALLS & GARDENS AND EMERALD ESTATE	•	•	•	•	•	•	•
WHALE WATCHING		•		•		•	
BOUTON TO ANSE JAMBON HIKE (Car/Hike)				•			
ZIP LINING ADVENTURES			•				
RHYTHM OF RUM TOUR		•				•	
POINTE SERAPHINE DUTY FREE SHOPPING			•				
TET PAUL NATURE TRAIL		•		•			•
EXPLORER TOUR		•		•			
CASTRIES AND MARIGOT BAY SHOPPING							•
SEA & LAND TOUR					•		
MORNE COUBARIL ZIP LINING AND PLANTATION TOUR						•	
MORNE COUBARIL/TET PAUL COMBO TOUR							•
ENBAS SAUT FALLS HIKING TOUR		•			•		
SEGWAY TOUR	•	•	•	•	•	•	•
GRAND COASTAL TOUR	On Request Only						
HELICOPTER TOUR							
MALGRETOUTE WATERFALL (Boat Ride/Hike)		•				•	
MUD BATHS WITH SPA ATTENDANT TOUR	•	•	•	•	•	•	•

RESORT ACTIVITIES (Sign up at the Guest Services or Concierge Desks or at the Scuba Center)

	SUN	MON	TUE	WED	THU	FRI	SAT
HALF DAY SAILING		•	•	•		•	•
FULL DAY SAILING					•		
SUNSET CRUISE		•	•	•		•	•
ESCORTED SNORKEL TRIP		•	•	•	•	•	•
NIGHT SNORKELING		•		•			
KOOL KAYAKING		•	•	•	•	•	•
SCUBA DIVING	•	•	•	•	•	•	•
JUNGLE BIKING	•	•	•	•	•	•	•
JAZZY SUNSET CRUISE					•		
ANSE MAMIN BIRDWATCHING TOUR		•				•	
EMERALD ESTATE CACAO TREE TO CHOCOLATE BAR TOUR		•		•		•	
EMERALD ESTATE TOUR AND INTERACTIVE COOKING CLASS				•			
BEHIND THE SCENES AT JADE MOUNTAIN					•		

BOOKABLE DAILY (Sign up at the Guest Services or Concierge Desks or at Reception)

	SUN	MON	TUE	WED	THU	FRI	SAT
GROS PITON CLIMB	•	•	•	•	•	•	•
DEEP SEA FISHING	•	•	•	•	•	•	•

EXCURSIONS PRICE LIST & DEPARTURE TIMES

TOUR	PRICE – PER PERSON – US \$	DEPARTURE	MEETING POINT
KOOL KAYAK ADVENTURES			
KAYAKING THE COAST OF SOUFRIERE BAY	49		SCUBA CENTER
PADDLE TO THE PITONS TOUR	59		SCUBA CENTER
FISHING VILLAGES & PICNIC LUNCH TOUR (includes picnic lunch)	99		SCUBA CENTER
SUNSET KAYAK TOUR	49		SCUBA CENTER
BIRDWATCHING KAYAK COMBO	54		SCUBA CENTER

Kool Kayaking activities are subject to 10% service charge and 10% VAT

JUNGLE BIKING ADVENTURES			
JUNGLE BIKING (Available Daily)	45 (repeat riding 25)	9:00 AM / 10:00 AM / 1:30 PM	

Jungle Biking is subject to 10% service charge and 10% VAT

RESORT ACTIVITIES			
FULL DAY SAILING	109	9.00 AM – 4.00 PM	SCUBA CENTER
HALF DAY SAILING	65	12.45 PM – 3.45 PM (Oct - Mar) 1.00 PM – 4.00 PM (Apr - Sep)	SCUBA CENTER
SUNSET CRUISE	89	4.15 PM – 6.15 PM (Oct - Mar) 4.45 PM – 6.45 PM (Apr - Sep)	SCUBA CENTER
JAZZY CHAMPAGNE SUNSET CRUISE	115	4.00 PM – 7.00 PM	SCUBA CENTER
PRIVATE SUNSET CHARTER	450 per couple	4.15 PM – 6.15 PM (Oct - Mar) 4.45 PM – 6.45 PM (Apr - Sep)	SCUBA CENTER
PRIVATE HONEYMOON CHARTER	650 per couple	9.00 AM – 4.00 PM	SCUBA CENTER
ESCORTED SNORKEL – 1 hr	25	10:15 AM and 2:15 PM	SCUBA CENTER
NIGHT SNORKELING	39	Sunset	SCUBA CENTER
ANSE MAMIN BIRDWATCHING	25	7.30 AM – 9.30 AM	SCUBA CENTER
PREMIUM RUM TASTING AT ANSE MAMIN	55	4.00 PM – 5.30 PM	SCUBA CENTER
EMERALD ESTATE CACAO TREE TO CHOCOLATE BAR TOUR	75	9.00 AM – 11:00 AM	PORTE CO-CHERE
EMERALD ESTATE TOUR AND INTERACTIVE COOKING CLASS* * Emerald Estate Tour includes taxi transfer (20 minutes)	95	9:00 AM – 11:00 AM	PORTE CO-CHERE
BEHIND THE SCENES AT JADE MOUNTAIN	15	2:00 PM	JADE CLUB

All resort activities are subject to 10% service charge and 10% VAT

ISLAND EXCURSIONS			
VOLCANO, DIAMOND FALLS & GARDENS AND EMERALD ESTATE Note: Tour does not include Mud Baths	59	9.00 AM – 12:15 PM	PORTE CO-CHERE
MUD BATHS WITH SPA ATTENDANT	95	8:30 – 10:30 AM / 3:30 – 5:30 PM	PORTE CO-CHERE
DIAMOND FALLS PRIVATE MORNING TOUR	(Available on Request)	8.15 AM – 10.15 AM	PORTE CO-CHERE
MALGRETOU WATERFALL (Boat Ride/Hike)	45	10.00 AM – NOON	BEACH BAR
BOUTON TO ANSE JAMBON HIKE (Car/Hike)	25	9.00 AM – 11.30 AM	PORTE CO-CHERE
POINTE SERAPHINE DUTY FREE SHOPPING	85	8.30 AM – 2.00 PM	SCUBA CENTER
ZIP LINE ADVENTURES	135	8.30 AM – 2.00 PM	SCUBA CENTER
SEA AND LAND TOUR	210	8.30 AM – 5.00 PM	SCUBA CENTER
CASTRIES/MARIGOT BAY SHOPPING TOUR (SATURDAY)	85	9.00 AM – 3.00 PM	SCUBA CENTER
RHYTHM OF RUM TOUR	125	9.00 AM – 2.00 PM	PORTE CO-CHERE
GROS PITON	105	6.30 AM – 1.00 PM	PORTE CO-CHERE
DOLPHIN AND WHALE WATCHING	69	9.15 AM – 11.00 AM	BEACH BAR
DEEP-SEA FISHING (31 ft)	4hrs - 680 / 6hrs - 845 / 8hrs - 1,125	8.00 AM – 4.00 PM	BEACH BAR
DEEP-SEA FISHING (38 ft)	4hrs - 890 / 6hrs - 1,170 / 8hrs - 1,450	8.00 AM – NOON	BEACH BAR
TET PAUL NATURE TRAIL	59	10.00 AM – NOON	PORTE CO-CHERE
EXPLORER TOUR	150	9.00 AM – 5.00 PM	PORTE CO-CHERE
MORNE COUBARIL ZIPLINING AND PLANTATION TOUR	115	10:00 AM – 12:30 PM	PORTE CO-CHERE
MORNE COUBARIL/TET PAUL COMBO TOUR	135	9:00 AM – 12:30 PM	PORTE CO-CHERE
ENBAS SAUT FALLS HIKING TOUR	85	8:00 AM – 12:45 PM	PORTE CO-CHERE
SEGWAY TOUR	215	9:30 AM – 2:30 PM	SCUBA CENTER
HELICOPTER TOUR	310		JADE MOUNTAIN HELIPAD

All island excursions are subject to 10% VAT

Helicopter sightseeing tours are available from the resorts helipad based on availability. Several tour routes are available; see the Concierge Desk for more information. Please consult our Guest Information Booklet in your room for excursion details. A 50% cancellation fee will be applied for cancellation of excursions with less than 24 hour notice. No-show will result in full charges being applied. Please also take note of the complimentary walks schedule and the Peach on Earth water taxi schedule, which you will find in the Guest Information Booklet. ANSE CHASTANET RESORT ADVENTURE FACILITIES – for details please consult your room information guide or visit the adventure desk at SCUBA ST LUCIA, located at the south end of the Anse Chastanet Beach